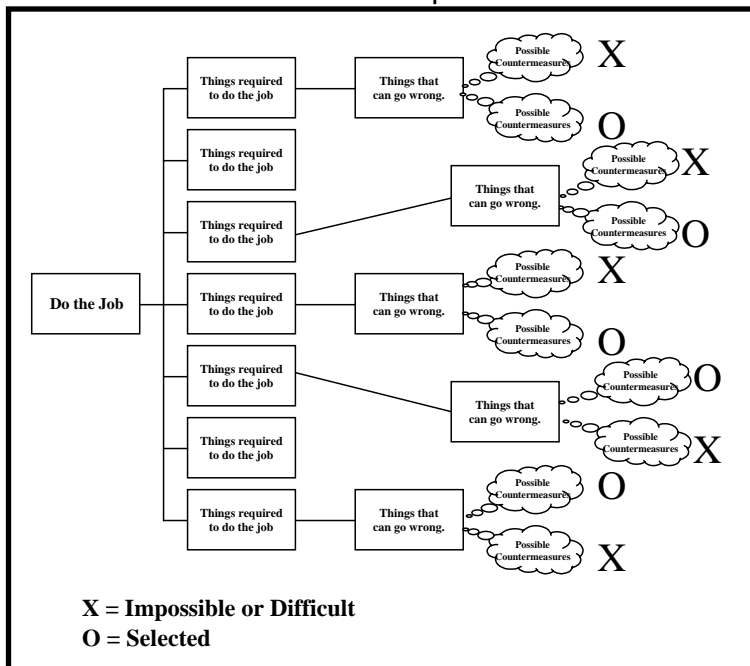


Process Decision Program

What The PDPC is a method which maps out any conceivable event and contingencies that can occur in any implementation plan. It identifies the most likely occurrences and feasible countermeasures in response to these occurrences.

When The PDPC is used whenever uncertainty exists in an implementation plan. When the plan is developed because of a new or unique task and it is fairly complex. When the stake for failure is high or there is little "slack time."

- How**
1. **Determine flow of activities:** This step usually starts with the Tree Diagram or some other implementation planning that has the subordinate steps to the main goals.
 2. **Choose the chart format:** You can use the graphical format or the Outline. We show a graphical format below.
 3. **Construct the PDPC:**
 - A. Place branches in order of implementation.
 - B. Add the second level of detail.
 - C. For each task, ask, "What could go wrong? Or "What various/unexpected paths could this step take."
 - D. What if's" go on level 3?
 - E. Brainstorm possible countermeasures for each what if. Draw them in a cloud to separate them from the what ifs.



4. **Evaluate and select the most feasible countermeasures.** An X indicates a difficult or impossible alternative, an O indicates selected countermeasures, below each countermeasure.

MORE INFO!

See pages 171 to 200 in the Memory Jogger Plus +